

## Carey Rd between Norwood Rd and McKenzie Ave

March 02, 2020 To March 05, 2020



The data presented here is for information purposes only and should not be considered authoritative for construction, geotechnical, engineering, navigational, legal, or other site-specific uses. The information shared is owned by the Transportation Division of the Engineering Department at the District of Saanich. Accuracy is not guaranteed.

Start Date: 2-Mar-20  
 Start Time: 0:03  
 Station ID: C0011-01

**Location 1: Carey Rd between Norwood Rd and McKenzie Ave**

Note:

DATE:	March 2, 2020		March 3, 2020		March 4, 2020		March 5, 2020		March 6, 2020		WK AVG		WK AVG	HOURLY
	MON		TUE		WED		THURS		FRI		NB	SB	CH 1+2	%
Time:	NB	SB	NB	SB	NB	SB	NB	SB	NB	SB	NB	SB		
12-1 AM	12	6	19	6	13	6	15	9			15	7	22	0.4%
1-2 AM	6	2	7	5	9	6	4	3			7	4	11	0.2%
2-3 AM	1	5	4	5	6	4	5	4			4	5	9	0.2%
3-4 AM	5	3	4	3	2	0	4	3			4	2	6	0.1%
4-5 AM	3	8	2	7	1	6	18	10			6	8	14	0.3%
5-6 AM	15	23	18	22	15	25	19	27			17	24	41	0.8%
6-7 AM	40	90	31	87	34	83	35	89			35	87	122	2.5%
7-8 AM	110	206	110	208	122	227	128	217			118	215	332	6.8%
8-9 AM	223	294	205	329	230	288	209	293			217	301	518	10.7%
9-10 AM	112	147	93	115	123	136	98	134			107	133	240	4.9%
10-11 AM	120	108	120	113	125	118	116	112			120	113	233	4.8%
11-12 PM	143	104	118	130	112	127	121	110			124	118	241	5.0%
12-1 PM	153	102	152	117	146	110	157	125			152	114	266	5.5%
1-2 PM	146	112	141	80	126	127	148	116			140	109	249	5.1%
2-3 PM	221	166	212	177	231	196	175	142			210	170	380	7.8%
3-4 PM	268	191	254	225	238	219	269	219			257	214	471	9.7%
4-5 PM	254	152	288	150	262	225	329	117			283	161	444	9.1%
5-6 PM	250	143	225	125	259	123	262	138			249	132	381	7.8%
6-7 PM	138	95	152	93	171	119	158	97			155	101	256	5.3%
7-8 PM	122	85	116	95	123	97	140	77			125	89	214	4.4%
8-9 PM	99	56	82	62	105	73	106	96			98	72	170	3.5%
9-10 PM	64	43	64	49	100	46	79	39			77	44	121	2.5%
10-11 PM	50	16	47	22	50	28	50	36			49	26	75	1.5%
11-12 AM	30	14	27	15	30	12	35	14			31	14	44	0.9%
<b>LANES</b>	<b>2585</b>	<b>2171</b>	<b>2491</b>	<b>2240</b>	<b>2633</b>	<b>2401</b>	<b>2680</b>	<b>2227</b>			<b>2597</b>	<b>2260</b>	<b>4857</b>	<b>100.0%</b>
<b>TOTAL</b>	<b>4756</b>		<b>4731</b>		<b>5034</b>		<b>4907</b>				<b>4860</b>			
	MON		TUE		WED		THURS		FRI		WK AVG			

PEAK HOUR					TOTAL VEHICALS-PEAK PERIODS		2 HOUR PEAK INTERVALS				
MAX. 7 - 9 am PEAK HOUR	518	⇒	10.7%	between 8-9 AM	2182	⇒	6 HR TOTAL	<b>2 HR AM (7 - 9 AM)</b>			
MAX. 7 - 11 am PEAK HOUR	518	⇒	10.7%	between 8-9 AM	1675	⇒	4 HR TOTAL	VEH / HR	VEH / 2HR	2 HR %	
MAX. 11 am - 1 pm PEAK HOUR	266	⇒	5.5%	between 12-1 PM				7-8 AM	332	850	17.5%
MAX. 11 am - 3 pm PEAK HOUR	380	⇒	7.8%	between 2-3 PM				8-9 AM	518		
MAX. 4 - 6 pm PEAK HOUR	444	⇒	9.1%	between 4-5 PM				<b>2 HR NOON (11 - 1 PM)</b>			
MAX. 3 - 6 pm PEAK HOUR	471	⇒	9.7%	between 3-4 PM				VEH / HR	VEH / 2HR	2 HR %	
								11-12 PM	241	507	10.4%
								12-1 PM	266		
								<b>2 HR PM (4 - 6 PM)</b>			
								VEH / HR	VEH / 2HR	2 HR %	
								4-5 PM	444	826	17.0%
								5-6 PM	381		

# Carey Rd between Norwood Rd and McKenzie Ave

Northbound

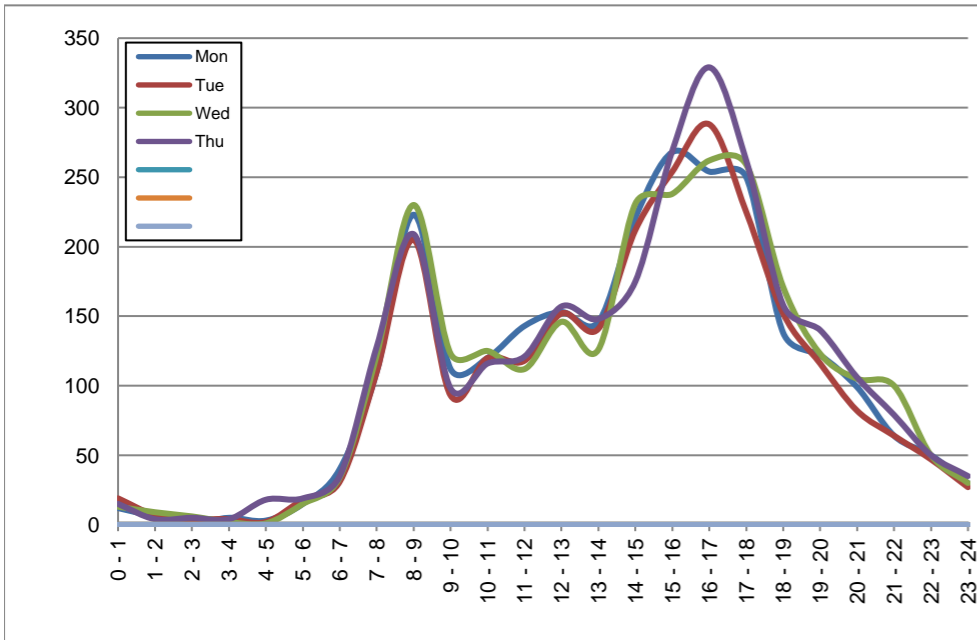
March 2, 2020 to March 5, 2020

## Hourly Volumes

Time Period	Mon	Tue	Wed	Thu			
	Mar 2	Mar 3	Mar 4	Mar 5			
0 - 1	12	19	13	15			
1 - 2	6	7	9	4			
2 - 3	1	4	6	5			
3 - 4	5	4	2	4			
4 - 5	3	2	1	18			
5 - 6	15	18	15	19			
6 - 7	40	31	34	35			
7 - 8	110	110	122	128			
8 - 9	223	205	230	209			
9 - 10	112	93	123	98			
10 - 11	120	120	125	116			
11 - 12	143	118	112	121			
12 - 13	153	152	146	157			
13 - 14	146	141	126	148			
14 - 15	221	212	231	175			
15 - 16	268	254	238	269			
16 - 17	254	288	262	329			
17 - 18	250	225	259	262			
18 - 19	138	152	171	158			
19 - 20	122	116	123	140			
20 - 21	99	82	105	106			
21 - 22	64	64	100	79			
22 - 23	50	47	50	50			
23 - 24	30	27	30	35			
<b>Day Total</b>	<b>2585</b>	<b>2491</b>	<b>2633</b>	<b>2680</b>			

## 15-Minute Volumes

Time Start	Mon	Tue	Wed	Thu				Time Start	Mon	Tue	Wed	Thu			
	Mar 2	Mar 3	Mar 4	Mar 5					Mar 2	Mar 3	Mar 4	Mar 5			
0:00	6	7	5	6				12:00	40	42	43	31			
0:15	3	2	1	4				12:15	38	41	27	41			
0:30	3	4	3	1				12:30	42	38	43	42			
0:45	0	6	4	4				12:45	33	31	33	43			
1:00	0	1	6	1				13:00	36	24	31	39			
1:15	0	1	1	0				13:15	25	37	27	32			
1:30	3	1	2	1				13:30	42	45	42	39			
1:45	3	4	0	2				13:45	43	35	26	38			
2:00	0	1	1	1				14:00	40	37	62	36			
2:15	0	1	2	1				14:15	47	49	57	37			
2:30	1	1	3	3				14:30	52	57	54	47			
2:45	0	1	0	0				14:45	82	69	58	55			
3:00	1	2	0	1				15:00	44	49	62	52			
3:15	1	1	1	1				15:15	69	59	67	61			
3:30	2	1	1	1				15:30	86	64	53	80			
3:45	1	0	0	1				15:45	69	82	56	76			
4:00	1	0	0	1				16:00	59	74	63	81			
4:15	2	0	0	8				16:15	70	67	79	69			
4:30	0	1	1	5				16:30	58	69	66	84			
4:45	0	1	0	4				16:45	67	78	54	95			
5:00	0	0	0	6				17:00	54	68	63	84			
5:15	4	2	2	9				17:15	80	59	91	71			
5:30	6	5	4	2				17:30	63	57	53	50			
5:45	5	11	9	2				17:45	53	41	52	57			
6:00	6	4	5	8				18:00	38	48	48	37			
6:15	6	5	9	4				18:15	37	44	46	47			
6:30	15	10	11	15				18:30	33	35	36	44			
6:45	13	12	9	8				18:45	30	25	41	30			
7:00	10	23	18	16				19:00	33	29	27	49			
7:15	23	16	23	25				19:15	31	26	43	40			
7:30	27	33	42	31				19:30	29	28	22	24			
7:45	50	38	39	56				19:45	29	33	31	27			
8:00	60	64	73	60				20:00	30	20	35	29			
8:15	53	55	54	64				20:15	24	17	26	35			
8:30	53	52	51	54				20:30	22	23	22	24			
8:45	57	34	52	31				20:45	23	22	22	18			
9:00	25	24	34	29				21:00	20	22	31	27			
9:15	26	22	25	23				21:15	22	23	25	21			
9:30	27	23	25	18				21:30	11	8	28	16			
9:45	34	24	39	28				21:45	11	11	16	15			
10:00	36	25	25	31				22:00	21	14	20	12			
10:15	35	34	38	36				22:15	14	13	11	12			
10:30	27	29	36	25				22:30	10	11	13	15			
10:45	22	32	26	24				22:45	5	9	6	11			
11:00	38	27	27	32				23:00	12	13	9	9			
11:15	30	32	30	33				23:15	6	4	14	11			
11:30	29	26	27	27				23:30	9	8	5	8			
11:45	46	33	28	29				23:45	3	2	2	7			



Site notes:

# Carey Rd between Norwood Rd and McKenzie Ave

Southbound

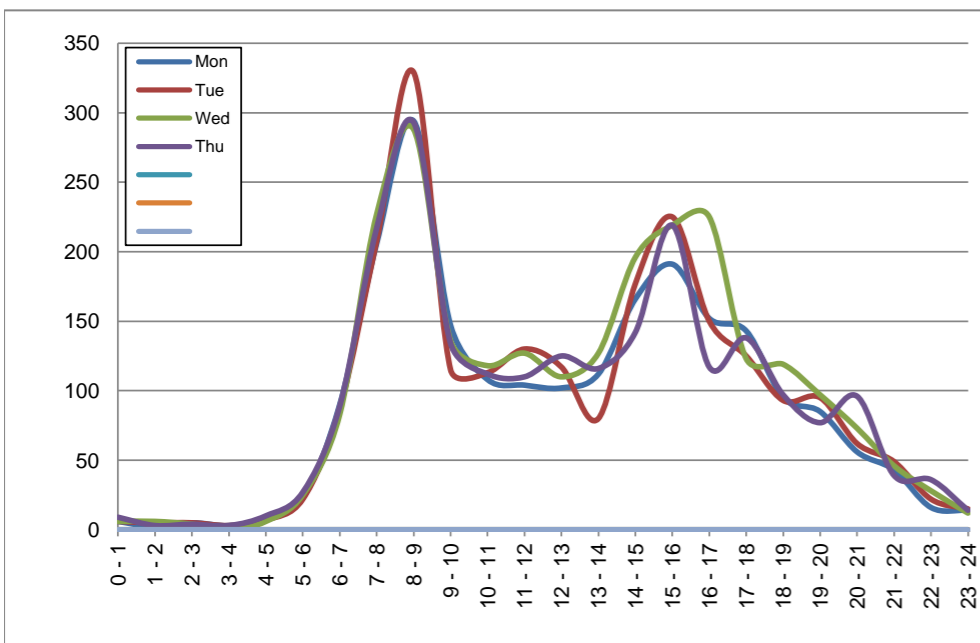
March 2, 2020 to March 5, 2020

## Hourly Volumes

Time Period	Mon	Tue	Wed	Thu			
	Mar 2	Mar 3	Mar 4	Mar 5			
0 - 1	6	6	6	9			
1 - 2	2	5	6	3			
2 - 3	5	5	4	4			
3 - 4	3	3	0	3			
4 - 5	8	7	6	10			
5 - 6	23	22	25	27			
6 - 7	90	87	83	89			
7 - 8	206	208	227	217			
8 - 9	294	329	288	293			
9 - 10	147	115	136	134			
10 - 11	108	113	118	112			
11 - 12	104	130	127	110			
12 - 13	102	117	110	125			
13 - 14	112	80	127	116			
14 - 15	166	177	196	142			
15 - 16	191	225	219	219			
16 - 17	152	150	225	117			
17 - 18	143	125	123	138			
18 - 19	95	93	119	97			
19 - 20	85	95	97	77			
20 - 21	56	62	73	96			
21 - 22	43	49	46	39			
22 - 23	16	22	28	36			
23 - 24	14	15	12	14			
<b>Day Total</b>	<b>2171</b>	<b>2240</b>	<b>2401</b>	<b>2227</b>			

## 15-Minute Volumes

Time Start	Mon	Tue	Wed	Thu			
	Mar 2	Mar 3	Mar 4	Mar 5			
0:00	1	0	2	3			
0:15	3	3	1	0			
0:30	1	1	0	1			
0:45	1	2	3	5			
1:00	0	1	3	0			
1:15	1	3	1	1			
1:30	1	0	1	1			
1:45	0	1	1	1			
2:00	1	1	1	2			
2:15	1	3	1	0			
2:30	2	1	0	1			
2:45	1	0	2	1			
3:00	0	1	0	0			
3:15	2	2	0	0			
3:30	0	0	0	2			
3:45	1	0	0	1			
4:00	0	0	0	2			
4:15	5	2	3	3			
4:30	2	2	1	3			
4:45	1	3	2	2			
5:00	6	4	5	8			
5:15	8	5	3	3			
5:30	6	7	6	6			
5:45	3	6	11	10			
6:00	14	18	19	11			
6:15	17	14	14	26			
6:30	25	29	23	27			
6:45	34	26	27	25			
7:00	44	44	39	40			
7:15	41	35	43	42			
7:30	58	65	63	65			
7:45	63	64	82	70			
8:00	62	74	71	82			
8:15	66	84	70	73			
8:30	89	99	96	78			
8:45	77	72	51	60			
9:00	42	31	36	40			
9:15	28	29	30	30			
9:30	42	19	41	36			
9:45	35	36	29	28			
10:00	28	23	26	29			
10:15	35	28	34	24			
10:30	24	35	35	32			
10:45	21	27	23	27			
11:00	29	42	36	20			
11:15	26	35	28	33			
11:30	22	27	34	33			
11:45	27	26	29	24			
12:00	25	28	26	31			
12:15	32	31	33	36			
12:30	25	24	30	28			
12:45	20	34	21	30			
13:00	27	21	29	31			
13:15	28	13	36	24			
13:30	28	24	31	28			
13:45	29	22	31	33			
14:00	32	24	29	22			
14:15	25	30	46	24			
14:30	37	58	42	51			
14:45	72	65	79	45			
15:00	51	52	69	54			
15:15	59	57	59	66			
15:30	39	42	52	52			
15:45	42	74	39	47			
16:00	37	46	57	28			
16:15	35	42	55	30			
16:30	43	35	60	30			
16:45	37	27	53	29			
17:00	43	33	39	44			
17:15	39	38	21	30			
17:30	37	25	39	37			
17:45	24	29	24	27			
18:00	20	24	29	20			
18:15	26	24	33	32			
18:30	28	21	34	17			
18:45	21	24	23	28			
19:00	24	30	26	20			
19:15	17	27	20	23			
19:30	25	21	32	21			
19:45	19	17	19	13			
20:00	15	20	21	9			
20:15	17	17	21	39			
20:30	9	15	16	23			
20:45	15	10	15	25			
21:00	16	15	11	18			
21:15	13	14	11	7			
21:30	10	10	12	10			
21:45	4	10	12	4			
22:00	8	5	5	8			
22:15	2	5	8	9			
22:30	3	7	7	10			
22:45	3	5	8	9			
23:00	2	2	3	5			
23:15	8	4	2	4			
23:30	3	3	2	1			
23:45	1	6	5	4			



Site notes:

# Vehicle Speed Summary

Saanich Engineering Department

Count Id: C0011-01

Filename: Carey Rd between Norwood Rd and McKenzie Ave-Mar-2020.xlsm

**Location:** Carey Rd between Norwood Rd and McKenzie Ave

Note:

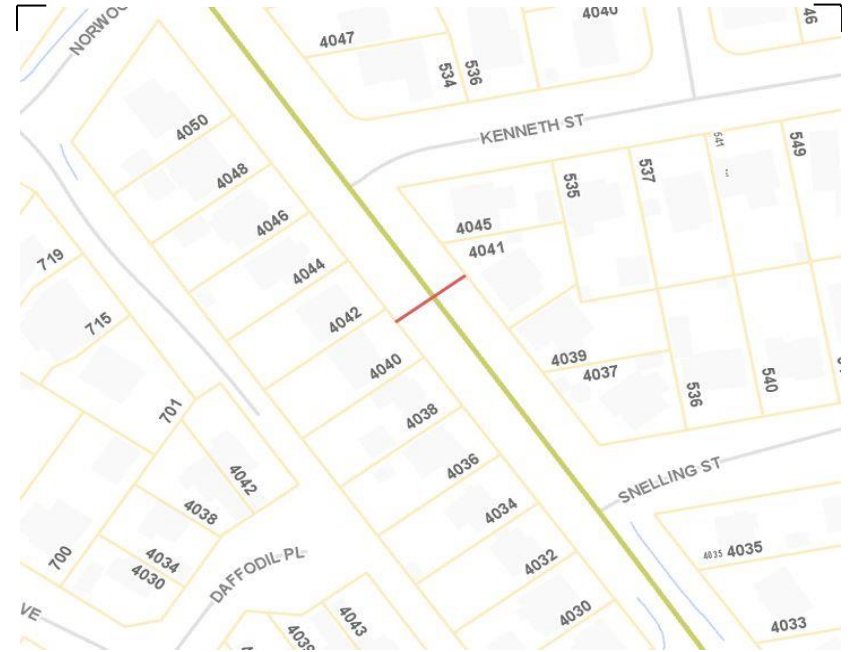
Direction: **North-South**

Dates: **March 02, 2020 To March 05, 2020**

*Filtered data*

AVG. SPEED	<b>31</b> mph	<b>49</b> km/h
50 % SPEED	<b>31</b> mph	<b>50</b> km/h
85 % SPEED	<b>35</b> mph	<b>57</b> km/h
95 % SPEED	<b>39</b> mph	<b>62</b> km/h

Location Map



Carey Rd between Norwood Rd and McKenzie Ave

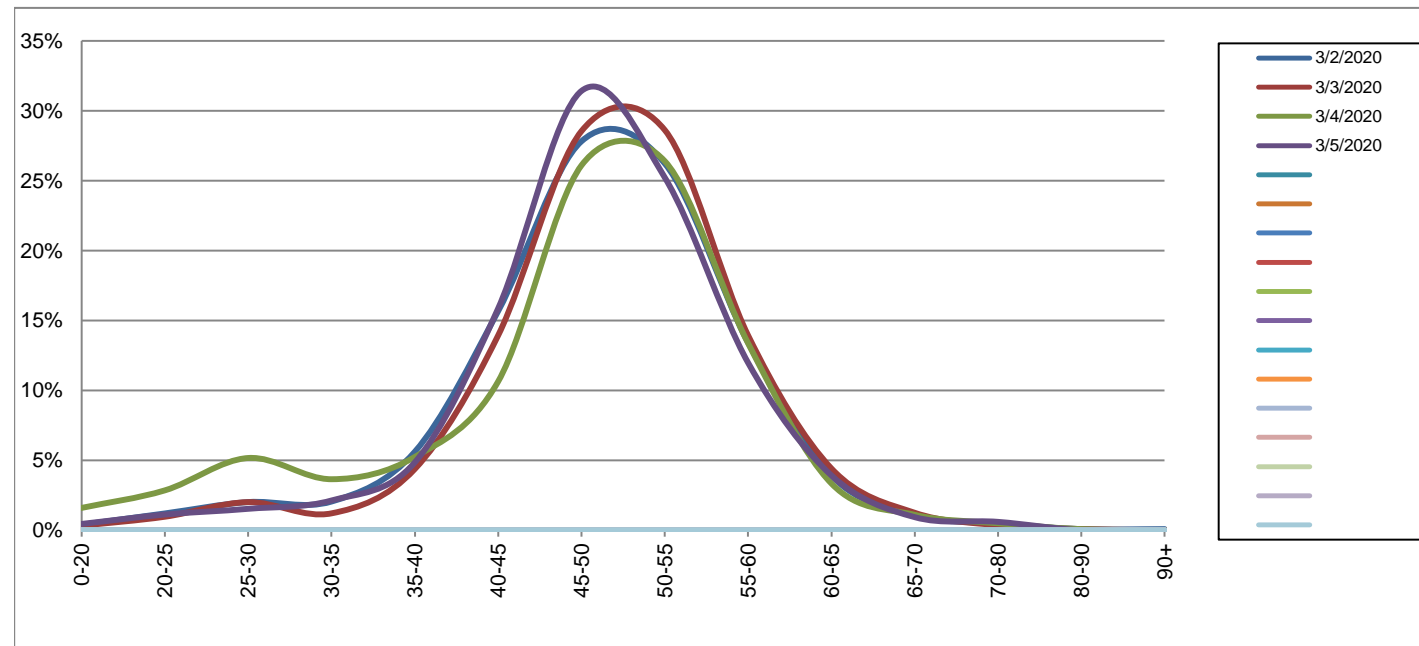
Northbound

March 2, 2020 to March 5, 2020

Daily Speed Bin Percentages															Daily Speed Bin Volumes														Total	Avg.
Bin #	1	2	3	4	5	6	7	8	9	10	11	12	13	14	1	2	3	4	5	6	7	8	9	10	11	12	13	14	Volume	Speed
Bin Speeds	0-20	20-25	25-30	30-35	35-40	40-45	45-50	50-55	55-60	60-65	65-70	70-80	80-90	90+	0-20	20-25	25-30	30-35	35-40	40-45	45-50	50-55	55-60	60-65	65-70	70-80	80-90	90+		
3/2/2020	0.4%	1.2%	2.0%	2.1%	5.6%	15.7%	27.8%	26.2%	13.4%	3.9%	1.1%	0.5%	0.1%	0.1%	10	31	52	53	145	405	719	678	347	101	28	12	2	2	2585	49
3/3/2020	0.3%	1.0%	2.0%	1.2%	4.4%	13.9%	28.5%	28.6%	13.9%	4.4%	1.2%	0.4%	0.1%	0.0%	8	24	50	30	109	347	711	713	347	110	31	9	2	0	2491	49
3/4/2020	1.6%	2.8%	5.2%	3.6%	5.2%	10.6%	26.1%	26.4%	13.4%	3.3%	1.1%	0.5%	0.1%	0.0%	42	75	136	96	138	280	687	695	352	88	29	13	2	0	2633	47
3/5/2020	0.4%	1.1%	1.5%	2.1%	4.9%	15.9%	31.4%	25.2%	12.0%	3.9%	0.9%	0.6%	0.0%	0.0%	12	30	41	57	130	425	842	676	321	105	25	16	0	0	2680	49
<b>Total</b>	<b>0.7%</b>	<b>1.5%</b>	<b>2.7%</b>	<b>2.3%</b>	<b>5.0%</b>	<b>14.0%</b>	<b>28.5%</b>	<b>26.6%</b>	<b>13.2%</b>	<b>3.9%</b>	<b>1.1%</b>	<b>0.5%</b>	<b>0.1%</b>	<b>0.0%</b>	<b>72</b>	<b>160</b>	<b>279</b>	<b>236</b>	<b>522</b>	<b>1457</b>	<b>2959</b>	<b>2762</b>	<b>1367</b>	<b>404</b>	<b>113</b>	<b>50</b>	<b>6</b>	<b>2</b>	<b>10389</b>	<b>48</b>

Speed Data Summary

Bin #	1	2	3	4	5	6	7	8	9	10	11	12	13	14	Total
Bin Speeds	0-20	20-25	25-30	30-35	35-40	40-45	45-50	50-55	55-60	60-65	65-70	70-80	80-90	90+	
Survey Total	72	160	279	236	522	1457	2959	2762	1367	404	113	50	6	2	10389
% Total	0.7%	1.5%	2.7%	2.3%	5.0%	14.0%	28.5%	26.6%	13.2%	3.9%	1.1%	0.5%	0.1%	0.0%	100%
Accumulated %	0.7%	2.2%	4.9%	7.2%	12.2%	26.2%	54.7%	81.3%	94.5%	98.4%	99.4%	99.9%	100.0%	100%	
Inverse Accum. %	99.3%	97.8%	95.1%	92.8%	87.8%	73.8%	45.3%	18.7%	5.5%	1.6%	0.6%	0.1%	0.0%	0.0%	
Average Speed	48 KM/H														



Site notes:

Carey Rd between Norwood Rd and McKenzie Ave

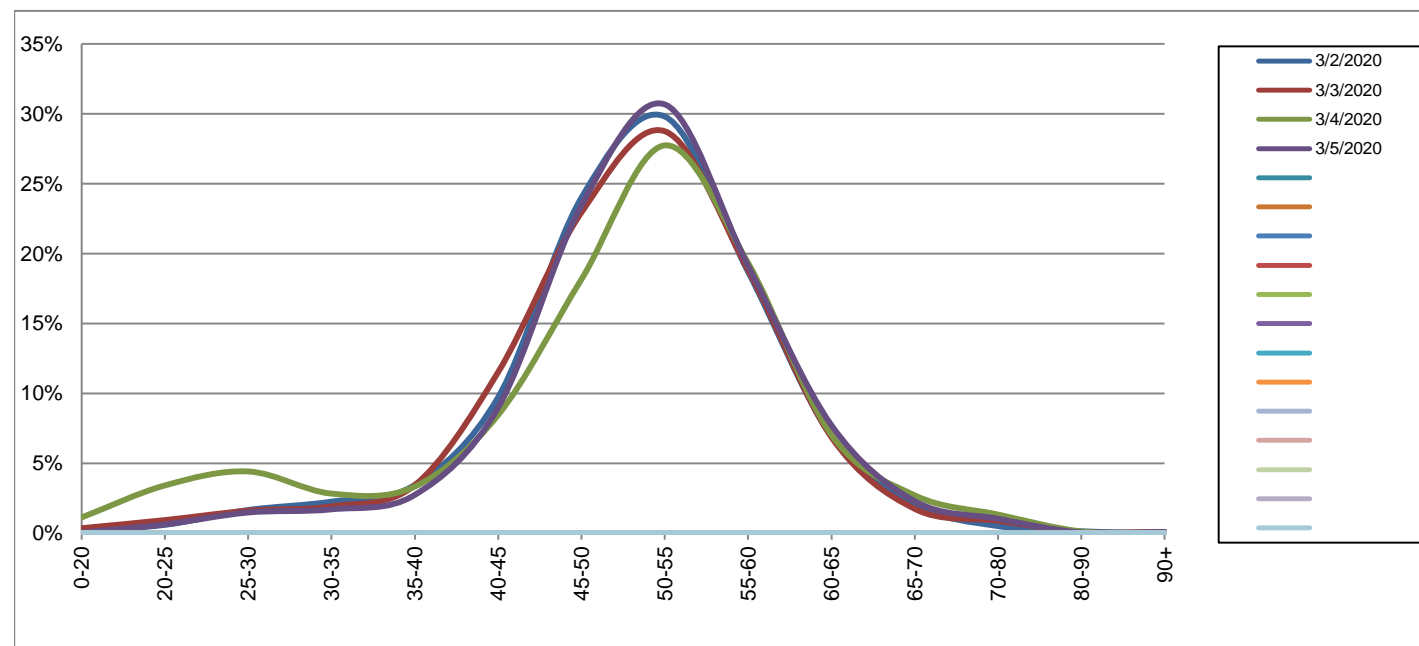
Southbound

March 2, 2020 to March 5, 2020

Daily Speed Bin Percentages															Daily Speed Bin Volumes														Total	Avg.
Bin #	1	2	3	4	5	6	7	8	9	10	11	12	13	14	1	2	3	4	5	6	7	8	9	10	11	12	13	14	Volume	Speed
Bin Speeds	0-20	20-25	25-30	30-35	35-40	40-45	45-50	50-55	55-60	60-65	65-70	70-80	80-90	90+	0-20	20-25	25-30	30-35	35-40	40-45	45-50	50-55	55-60	60-65	65-70	70-80	80-90	90+		
3/2/2020	0.2%	0.6%	1.7%	2.3%	3.5%	9.7%	24.0%	29.8%	18.7%	7.0%	2.0%	0.5%	0.1%	0.0%	4	13	36	49	75	211	521	647	406	151	44	11	3	0	2171	51
3/3/2020	0.4%	0.9%	1.6%	1.9%	3.4%	11.5%	22.9%	28.8%	18.8%	6.9%	1.7%	0.9%	0.1%	0.1%	8	21	36	43	77	258	514	644	422	154	39	20	2	2	2240	51
3/4/2020	1.1%	3.4%	4.4%	2.8%	3.3%	8.5%	18.2%	27.7%	19.3%	7.0%	2.7%	1.3%	0.1%	0.0%	27	82	106	68	80	203	436	666	464	169	65	32	3	0	2401	49
3/5/2020	0.0%	0.6%	1.5%	1.7%	2.7%	9.0%	23.4%	30.7%	19.1%	7.7%	2.3%	1.0%	0.0%	0.1%	1	14	33	38	61	200	522	683	426	172	51	23	1	2	2227	51
<b>Total</b>	0.4%	1.4%	2.3%	2.2%	3.2%	9.6%	22.0%	29.2%	19.0%	7.1%	2.2%	1.0%	0.1%	0.0%	40	130	211	198	293	872	1993	2640	1718	646	199	86	9	4	9039	51

Speed Data Summary

Bin #	1	2	3	4	5	6	7	8	9	10	11	12	13	14	Total
Bin Speeds	0-20	20-25	25-30	30-35	35-40	40-45	45-50	50-55	55-60	60-65	65-70	70-80	80-90	90+	
Survey Total	40	130	211	198	293	872	1993	2640	1718	646	199	86	9	4	9039
% Total	0.4%	1.4%	2.3%	2.2%	3.2%	9.6%	22.0%	29.2%	19.0%	7.1%	2.2%	1.0%	0.1%	0.0%	100%
Accumulated %	0.4%	1.9%	4.2%	6.4%	9.6%	19.3%	41.3%	70.5%	89.6%	96.7%	98.9%	99.9%	100.0%	100%	
Inverse Accum. %	99.6%	98.1%	95.8%	93.6%	90.4%	80.7%	58.7%	29.5%	10.4%	3.3%	1.1%	0.1%	0.0%	0.0%	
Average Speed	51 KM/H														



Site notes:

Carey Rd between Norwood Rd and McKenzie Ave

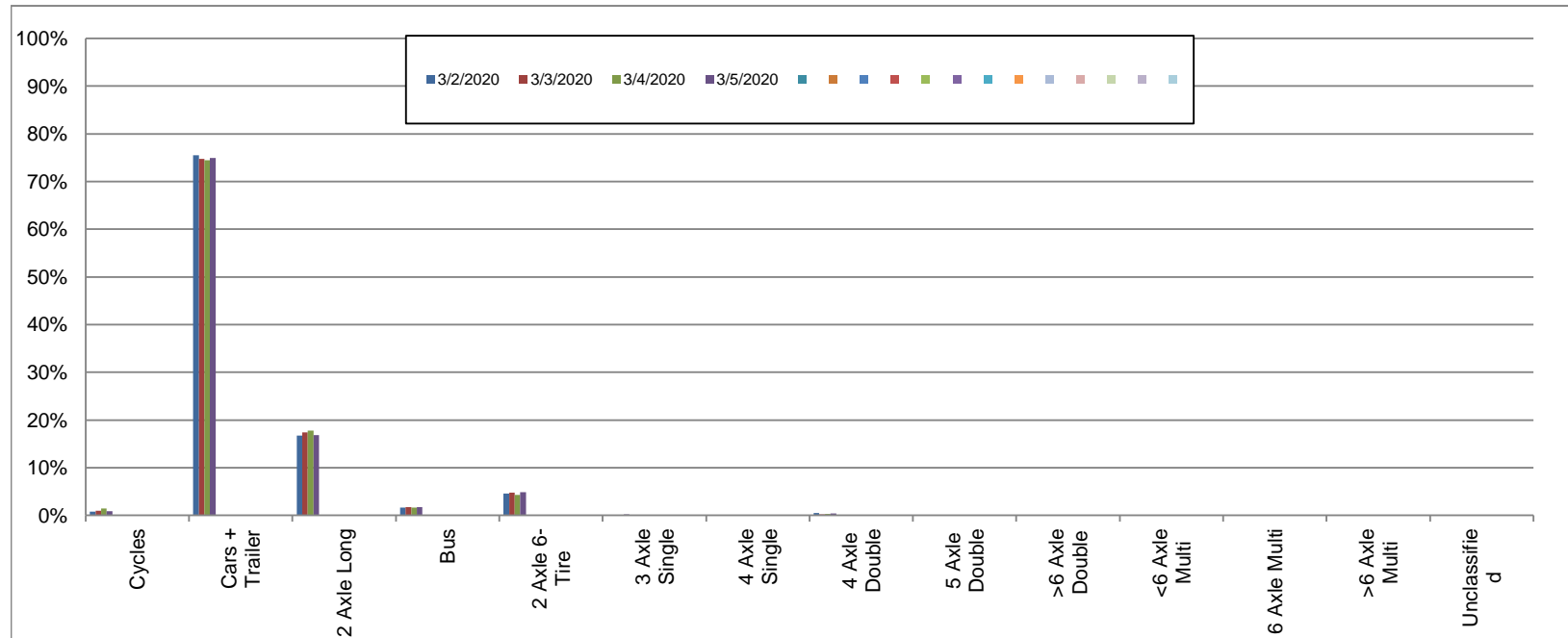
Northbound

March 2, 2020 to March 5, 2020

Daily Class Bin Percentages															Daily Class Bin Volumes														
Bin #	1	2	3	4	5	6	7	8	9	10	11	12	13	14	1	2	3	4	5	6	7	8	9	10	11	12	13	14	Total Volume
Bin Class	Cycles	Cars + Trailer	2 Axle Long	Bus	2 Axle 6-Tire	3 Axle Single	4 Axle Single	4 Axle Double	5 Axle Double	>6 Axle Double	<6 Axle Multi	6 Axle Multi	>6 Axle Multi	Unclassified	Cycles	Cars + Trailer	2 Axle Long	Bus	2 Axle 6-Tire	3 Axle Single	4 Axle Single	4 Axle Double	5 Axle Double	>6 Axle Double	<6 Axle Multi	6 Axle Multi	>6 Axle Multi	Unclassified	
3/2/2020	0.8%	75.5%	16.8%	1.6%	4.6%	0.1%	0.0%	0.5%	0.0%	0.0%	0.0%	0.0%	0.0%	0.1%	21	1952	433	42	119	2	1	13	0	0	0	0	0	2	2585
3/3/2020	0.9%	74.7%	17.4%	1.7%	4.7%	0.1%	0.0%	0.2%	0.0%	0.0%	0.0%	0.0%	0.0%	0.1%	23	1862	434	42	118	3	1	6	0	0	0	0	0	2	2491
3/4/2020	1.4%	74.4%	17.8%	1.6%	4.3%	0.1%	0.0%	0.3%	0.0%	0.0%	0.0%	0.0%	0.0%	0.1%	38	1960	469	42	112	3	0	7	0	0	0	0	0	2	2633
3/5/2020	0.9%	75.0%	16.9%	1.7%	4.8%	0.2%	0.0%	0.4%	0.0%	0.0%	0.0%	0.0%	0.0%	0.1%	23	2009	452	46	129	6	0	11	1	1	0	0	0	2	2680
<b>Total</b>	<b>1.0%</b>	<b>74.9%</b>	<b>17.2%</b>	<b>1.7%</b>	<b>4.6%</b>	<b>0.1%</b>	<b>0.0%</b>	<b>0.4%</b>	<b>0.0%</b>	<b>0.0%</b>	<b>0.0%</b>	<b>0.0%</b>	<b>0.0%</b>	<b>0.1%</b>	<b>105</b>	<b>7783</b>	<b>1788</b>	<b>172</b>	<b>478</b>	<b>14</b>	<b>2</b>	<b>37</b>	<b>1</b>	<b>1</b>	<b>0</b>	<b>0</b>	<b>0</b>	<b>8</b>	<b>10389</b>

Class Data Summary

Bin #	1	2	3	4	5	6	7	8	9	10	11	12	13	14	Total Volume
Bin Class	Cycles	Cars + Trailer	2 Axle Long	Bus	2 Axle 6-Tire	3 Axle Single	4 Axle Single	4 Axle Double	5 Axle Double	>6 Axle Double	<6 Axle Multi	6 Axle Multi	>6 Axle Multi	Unclassified	Total Volume
<b>Survey Total</b>	105	7783	1788	172	478	14	2	37	1	1	0	0	0	8	10389
<b>% Total</b>	1.0%	74.9%	17.2%	1.7%	4.6%	0.1%	0.0%	0.4%	0.0%	0.0%	0.0%	0.0%	0.0%	0.1%	100%
<b>Accumulated %</b>	1.0%	75.9%	93.1%	94.8%	99.4%	99.5%	99.5%	99.9%	99.9%	99.9%	99.9%	99.9%	99.9%	100.0%	
<b>Inv. Accum. %</b>	99.0%	24.1%	6.9%	5.2%	0.6%	0.5%	0.5%	0.1%	0.1%	0.1%	0.1%	0.1%	0.1%	0.0%	



Classification Descriptions

Bin #	Bin Description
1	Motorcycles
2	Passenger cars, including those with recreational trailers
3	2-axle pick-ups, vans, and RVs, including those with recreational trailers
4	Buses
5	2-axle, 6-tire single units
6	3-axle single units
7	4-axle single units
8	3-axle or 4-axle double unit
9	5-axle double unit
10	6-, 7-, or 8-axle double unit
11	5-axle multiple unit
12	6-axle multiple unit
13	7-or-more-axle multiple unit
14	Vehicles that could not be classified

Site notes:



Carey Rd between Norwood Rd and McKenzie Ave

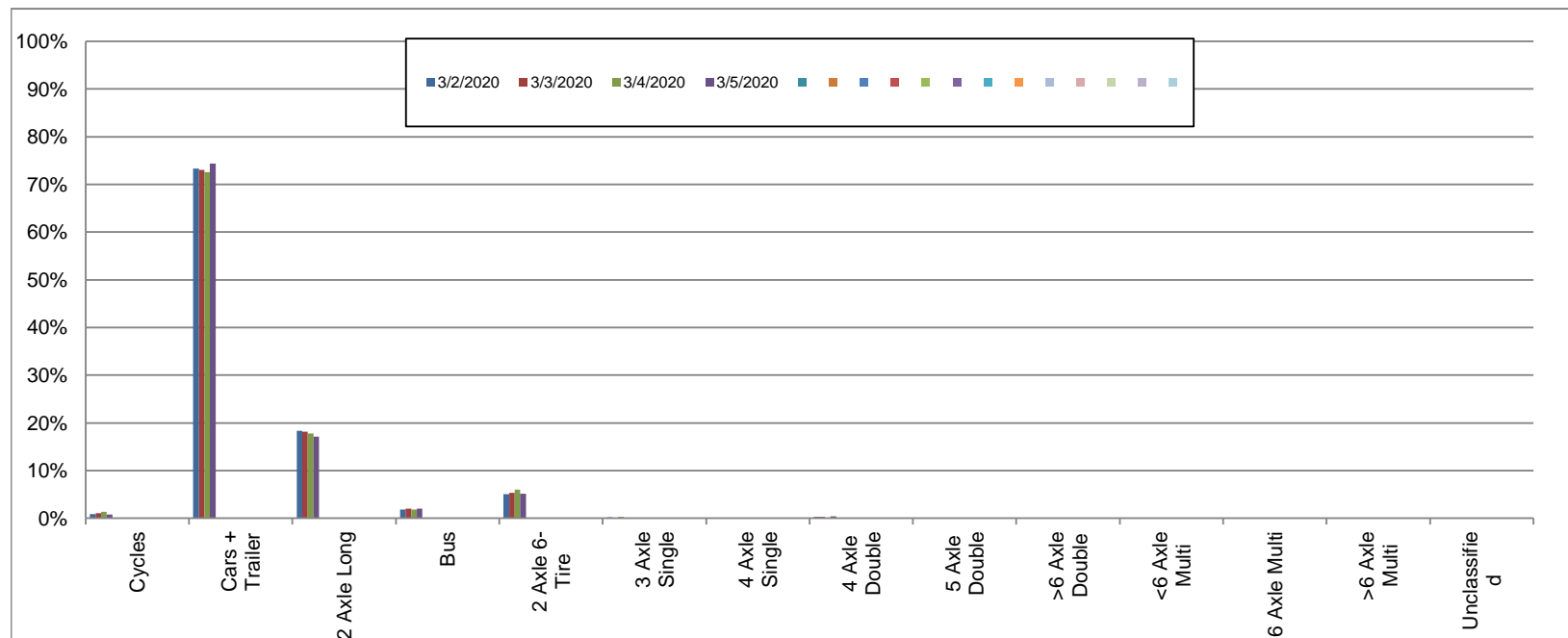
Southbound

March 2, 2020 to March 5, 2020

Daily Class Bin Percentages															Daily Class Bin Volumes											Total Volume				
Bin #	1	2	3	4	5	6	7	8	9	10	11	12	13	14	1	2	3	4	5	6	7	8	9	10	11		12	13	14	
Bin Class	Cycles	Cars + Trailer	2 Axle Long	Bus	2 Axle 6-Tire	3 Axle Single	4 Axle Single	4 Axle Double	5 Axle Double	>6 Axle Double	<6 Axle Multi	6 Axle Multi	>6 Axle Multi	Unclassified	Cycles	Cars + Trailer	2 Axle Long	Bus	2 Axle 6-Tire	3 Axle Single	4 Axle Single	4 Axle Double	5 Axle Double	>6 Axle Double	<6 Axle Multi	6 Axle Multi	>6 Axle Multi	Unclassified		
3/2/2020	0.8%	73.3%	18.4%	1.8%	5.1%	0.2%	0.0%	0.3%	0.0%	0.0%	0.0%	0.0%	0.0%	0.0%	18	1592	399	40	110	4	0	7	0	0	0	0	0	0	1	2171
3/3/2020	1.1%	73.1%	18.2%	2.0%	5.4%	0.0%	0.0%	0.3%	0.0%	0.0%	0.0%	0.0%	0.0%	0.0%	24	1637	407	44	120	1	0	7	0	0	0	0	0	0	0	2240
3/4/2020	1.4%	72.6%	17.8%	1.8%	6.0%	0.3%	0.0%	0.1%	0.0%	0.0%	0.0%	0.0%	0.0%	0.1%	33	1742	427	43	143	7	0	3	0	1	0	0	0	2	2401	
3/5/2020	0.8%	74.4%	17.2%	2.0%	5.1%	0.0%	0.0%	0.4%	0.0%	0.0%	0.0%	0.0%	0.0%	0.0%	18	1657	382	45	114	1	0	9	0	0	0	0	0	1	2227	
<b>Total</b>	<b>1.0%</b>	<b>73.3%</b>	<b>17.9%</b>	<b>1.9%</b>	<b>5.4%</b>	<b>0.1%</b>	<b>0.0%</b>	<b>0.3%</b>	<b>0.0%</b>	<b>0.0%</b>	<b>0.0%</b>	<b>0.0%</b>	<b>0.0%</b>	<b>0.0%</b>	<b>93</b>	<b>6628</b>	<b>1615</b>	<b>172</b>	<b>487</b>	<b>13</b>	<b>0</b>	<b>26</b>	<b>0</b>	<b>1</b>	<b>0</b>	<b>0</b>	<b>0</b>	<b>4</b>	<b>9039</b>	

Class Data Summary

Bin #	1	2	3	4	5	6	7	8	9	10	11	12	13	14	Total Volume
Bin Class	Cycles	Cars + Trailer	2 Axle Long	Bus	2 Axle 6-Tire	3 Axle Single	4 Axle Single	4 Axle Double	5 Axle Double	>6 Axle Double	<6 Axle Multi	6 Axle Multi	>6 Axle Multi	Unclassified	Total Volume
<b>Survey Total</b>	93	6628	1615	172	487	13	0	26	0	1	0	0	0	4	9039
<b>% Total</b>	1.0%	73.3%	17.9%	1.9%	5.4%	0.1%	0.0%	0.3%	0.0%	0.0%	0.0%	0.0%	0.0%	0.0%	100%
<b>Accumulated %</b>	1.0%	74.4%	92.2%	94.1%	99.5%	99.7%	99.7%	99.9%	99.9%	100.0%	100.0%	100.0%	100.0%	100.0%	
<b>Inv. Accum. %</b>	99.0%	25.6%	7.8%	5.9%	0.5%	0.3%	0.3%	0.1%	0.1%	0.0%	0.0%	0.0%	0.0%	0.0%	



Classification Descriptions

Bin #	Bin Description
1	Motorcycles
2	Passenger cars, including those with recreational trailers
3	2-axle pick-ups, vans, and RVs, including those with recreational trailers
4	Buses
5	2-axle, 6-tire single units
6	3-axle single units
7	4-axle single units
8	3-axle or 4-axle double unit
9	5-axle double unit
10	6-, 7-, or 8-axle double unit
11	5-axle multiple unit
12	6-axle multiple unit
13	7-or-more-axle multiple unit
14	Vehicles that could not be classified

Site notes: